



Kim Newcomb



NewVoice

STUDIO

Ear & Interval Training



Ear & Interval Training Tools

- Interval Cheat Sheets
- Scale Degrees
- Letter Names
- Solfege (Movable Do)
- Curwen Hand Signs (Kinesthetic)



Interval Cheat Sheet

- **Minor 2nd** - Jaws
- **Major 2nd** - Happy Birthday
- **Minor 3rd** - Greensleeves
- **Major 3rd** - When The Saints Go Marching In
- **Perfect 4th** - Here Comes The Bride
- **Tritone** - Maria (*from West Side Story*) or The Simpsons Theme
- **Perfect 5th** - Twinkle Twinkle
- **Minor 6th** - The Entertainer
- **Major 6th** - NBC
- **Minor 7th** - Somewhere (*from West Side Story*)
- **Major 7th** - Take On Me
- **Octave** - Somewhere Over The Rainbow

<https://flypaper.soundfly.com/tips/interval-cheat-sheet-songs-to-help-you-remember-common-intervals/>

In order to put most of these exercises into practice, I would like to take you through the first half of the sight-reading process (pitch development) using my preferred method; solfege syllables & Curwen hand signs.

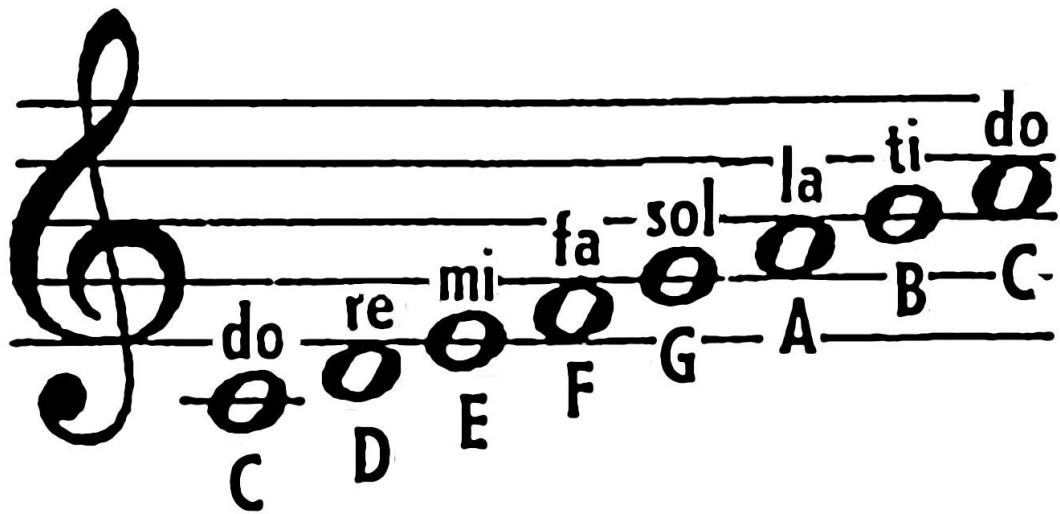
- Echo Singing
- Auditation
- Sing-through
- Tonal resolutions
- Scales
- Pitch Patterns
- Pitch Identification
- Pitch Recall



Exercises

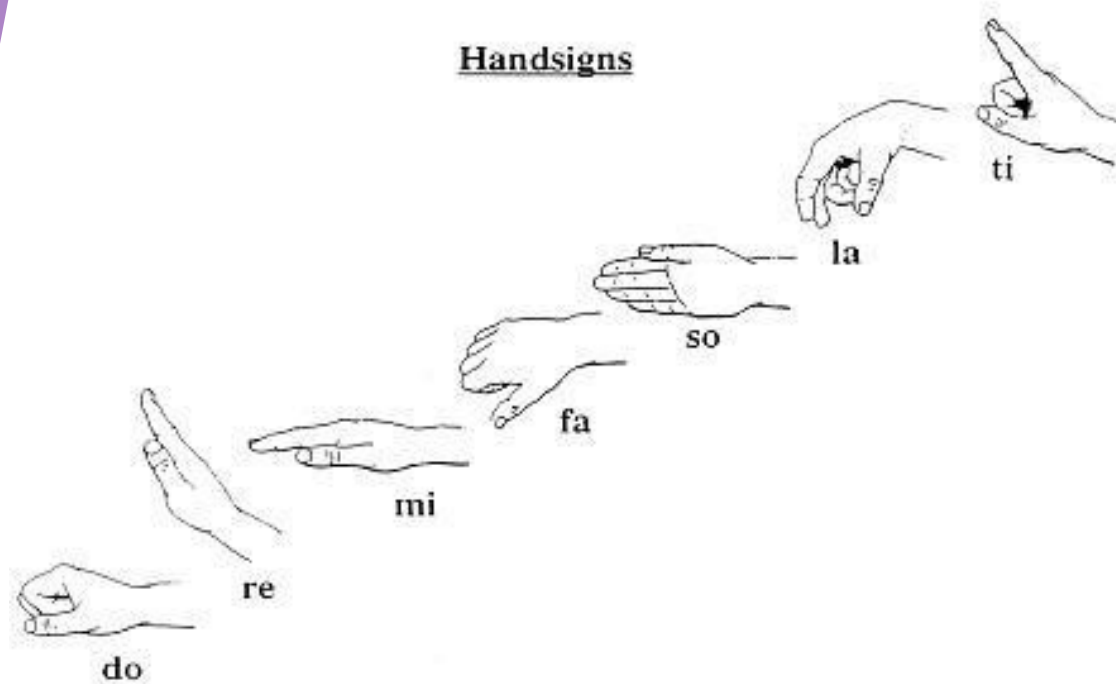


Solfege Syllables



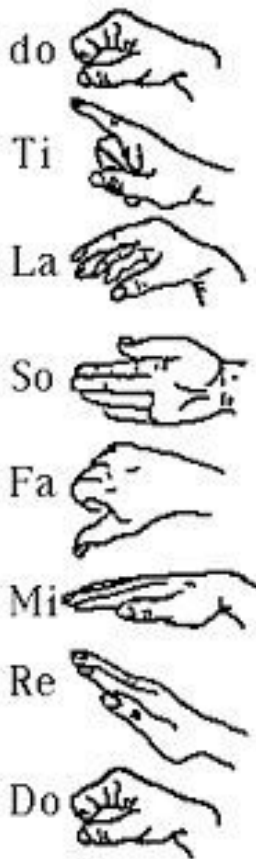


Curwen Hand Signs



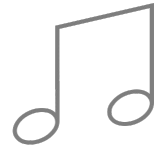


Pitch Ladder



- Sing-through
- Tonal resolutions
- Scales
- Scale Sequences

- | | | |
|-------------------|----------------------------|--------------------|
| 1. DRMRD | 6. DMSMD | 11. <u>DL</u> STD |
| 2. DRMFD | 7. DMSLD | 12. DMSFD |
| 3. DRMDD | 8. DRFMD | 13. DR <u>T</u> SD |
| 4. D <u>I</u> DRD | 9. D <u>I</u> R <u>I</u> D | 14. DSLTD' |
| 5. DRMMD | 10. <u>DSL</u> TD | 15. DMSTD' |



Pitch Patterns



Pitch Recall

- Echo with correct solfege syllables...



Pitch Recall

1.

2.

3.

4.

5.

6.

7.

8.


9.

10.

Modified Staff

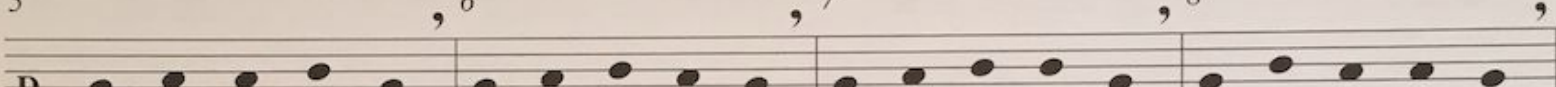
● = 100

1 , 2 , 3 , 4 ,



Do is on the second line.

5 , 6 , 7 , 8 ,



Detailed description: The image shows two musical staves. The first staff contains four measures of music, each with a single note. The notes are labeled 1, 2, 3, and 4 above them. The first note is on the second line of the staff and is labeled 'D'. A curved arrow points from the text 'Do is on the second line.' to this note. The second staff contains four measures of music, each with a single note. The notes are labeled 5, 6, 7, and 8 above them. The first note is on the second line of the staff and is labeled 'D'. The notes in both staves are represented by black dots on a five-line staff.

Modified Staff

The image displays a musical staff with a modified clef, labeled 'D' at the beginning of each line. The staff is divided into three systems, each containing four measures. The notes are numbered 17 through 28, with a comma indicating the end of each measure. The notes are placed on the lines of the staff, and the staff itself is slightly curved downwards from left to right. The notes in each measure are: Measure 17: D4, E4, F4, G4, A4; Measure 18: B4, C5, D5, E5, F5; Measure 19: G5, A5, B5, C6, D6; Measure 20: E6, F6, G6, A6, B6; Measure 21: C7, D7, E7, F7, G7; Measure 22: A7, B7, C8, D8, E8; Measure 23: F8, G8, A8, B8, C9; Measure 24: D9, E9, F9, G9, A9; Measure 25: B9, C10, D10, E10, F10; Measure 26: G10, A10, B10, C11, D11; Measure 27: E11, F11, G11, A11, B11; Measure 28: C12, D12, E12, F12, G12.

Sight Reading
Examples

The image displays three staves of musical notation, each enclosed in a black rectangular frame. All three staves are written in the treble clef, 4/4 time signature, and feature a key signature of one flat (Bb). The first staff contains a sequence of notes: G4, A4, Bb4, C5, Bb4, A4, G4, F4, E4, D4, C4. The second staff contains: G4, A4, Bb4, C5, Bb4, A4, G4, F4, E4, D4, C4. The third staff contains: G4, A4, Bb4, C5, Bb4, A4, G4, F4, E4, D4, C4. Each staff concludes with a double bar line.

TAGS!

Now let's put that ear & interval training into practice...

89. Over Troubled Waters

O - ver trou - bled wat - ers I will ease your mind.

Fraser Brown, early 1970s



Intonation

- **Melodic Intonation** - How “in tune” we are in relation to our own melodic line.
 - TE Tuner
- **Harmonic Intonation** - How “in tune” we are in relation to the other singers singing with us on different parts.



Overtones



Kim Newcomb



NewVoice

STUDIO

learning tracks • coaching • voice lessons

 /NewVoice.Studio.Official

Website: NewVoice.Studio